



The Future of Work

HEADLINE SPONSOR

**Sir Robert
McALPINE**

THURSDAY 2 MARCH 2023

#IWD2023 #InternationalWomensDay #SHINEAwards #TheWLA

A warm welcome from The WLA's founder



I am delighted to welcome you to our 9th WLA Conference celebrating International Women's Day.

This year our theme is 'The Future of Work' and the impact on Leadership, Talent Sourcing and Retention. When we look back over the past few years we have all been hit with enormous change – particularly the impact of Brexit on labour shortages and Covid on ways of working. And whilst there are many challenges facing leaders this event is purposefully designed to inspire change at a personal, organisational and societal level.

Every one of us here today has a choice. A choice in how we personally show up, in how we take responsibility for the future and how we can all make our world of work a far more inclusive, collaborative and fun place to be.

I've had the great privilege of speaking with each of our speakers in preparation for today. Their inspiration, their passion and their determination to positively make a difference is phenomenal. Whilst they don't individually have the answers to the big questions, collectively they and I believe that we can all shift our beliefs and our actions to

Welcome to our 2023 International Women's Day Conference!

make the world a better place – at whatever level we can influence at.

Never listen to your own rhetoric that you are too old, too young, too inexperienced, too small to have an impact. Don't walk away from today without committing to actions and without building a stronger network than when you arrived today.

As we celebrate International Women's Day, our speakers today will share humbling stories, successes, and challenges which I know inspire and motivate us all to lead positive change. Being in person again gives us an opportunity, in true WLA style, to connect with our community, meet new people and celebrate our uplifting SHINE Awards. I'd like to close with a huge thank you to all of our sponsors: our headline sponsor Sir Robert McAlpine, our SHINE Award sponsors Stanmore Insurance, Tata Chemicals, Cadent Gas, Amey and Mid Communications, to our flower wall sponsor Essar Oil, our goodie bag sponsor, Consilio, our Masterclass Sponsor – ABB and to Hitachi for last night's VIP Drinks Reception. A huge thank you to all our speakers for taking time out of their schedules and finally, a big thank you to you. And finally to our WLA Ambassadors for giving your time so freely to support our cause and of course, to our amazing members.

Thank you for supporting this event.

Have an amazing, uplifting and transformative day,

Sandra

Agenda

INTRODUCTION | MARK SIMMONDS, CONFERENCE MC

08:00 REGISTRATION, COFFEE AND NETWORKING

09:00  OPENING SESSION

Sandra Pinnington
Founder
The WLA

Sarah Crew
Chief Constable
Avon and Somerset Police

Kayla Osterhoff
Women's Health Expert
Her Biorhythm

10:45 BREAK

11:15  BUSINESS PANEL DEBATE

Mark Malcomson CBE
Principle & Chief Executive
City Lit

Clare Barlow
Chief People Officer
National Nuclear
Laboratory

Alexandra Kreft
Vice President
EMEA Global Alliances
Dell Technologies

12:00  FIRESIDE CHAT

Ed McAlpine
Chairman
Sir Robert McAlpine

Sandra Pinnington
Founder
The WLA

Agenda

12:35



SEEING BEYOND THE COLOUR

Rita Kaydea

Senior Project Lead
Epiq Global

Claire D'Abreu-Hayling

Chief Scientific Officer
Sandoz

Jane Bates

Founder
Koru Collective Limited

13:05

LUNCH

14:00



MASTERCLASSES

WABISUGI - THE ART OF RESILIENCE FOR EVERYDAY WARRIORS

Graham Wilson, International Leadership Expert & Founder, Successfactory

UNDERSTANDING WOMEN'S BIO RHYTHMS

Kayla Osterhoff, Women's Health Expert & Founder, Her Biorhythms

THE ART OF THE FEMININE LEADER

Sandra Pinnington, Founder of the WLA & Executive Coach

HIGH PERFORMING LEADERS OF THE FUTURE

Colin McArdle, Managing Partner, Time Consulting Group

15:30

BREAK

15:45



CHARITY SPOTLIGHT

Jane Kenyon

Founder
Girls Out Loud Charity

16:00



INSPIRATIONAL SPEAKER

Penny Briscoe OBE

Penny has been Director of Sport at the British Paralympic Association since 2002 and is confirmed as Chef de Mission for the next summer Paralympic Games in Paris 2024.

17:00

BREAK



SHINE AWARDS CEREMONY



RISING STAR

sponsored by Sir Robert McAlpine

MALE AGENT OF CHANGE

sponsored by Mid Communications

SUSTAINABILITY LEADER OF THE YEAR

sponsored by Amey

FEMALE LEADER OF THE YEAR

sponsored by Cadent Gas

REMARKABLE WOMAN OF THE YEAR

sponsored by Stanmore Insurance

OUTSTANDING WLA CONTRIBUTOR OF THE YEAR

sponsored by The WLA

PEOPLE & TALENT INNOVATORS OF THE YEAR

sponsored by The Tata Chemicals Europe

18:00

FINISH

Everyone is welcome



www.srm.com

**Sir Robert
McALPINE**

“Sir Robert McAlpine is a family-owned building and civil engineering company operating across the UK. In 2019, we celebrated our 150th anniversary.

We are honoured to have worked on some of Britain’s most iconic buildings and projects.

The values at the heart of our operations include a commitment to the highest standards of safety, quality, engineering excellence, sustainability, and an unswerving focus on the needs and aspirations of our clients.

Our aim is to make a positive impact on the communities and the environment in which we operate.

We boldly aspire to become the best place to work, welcoming a diversity of talent to our inclusive family culture, as we proudly build Britain’s future heritage.”

www.srm.com



“Continuing our relationship with the WLA, Sir Robert McAlpine is proud to once again be a headline sponsor for the International Women’s Day Conference and Shine Awards 2023.”

Business Panel

Join us for this interactive discussion on the Future of Work through the lens of people.

Providing practical examples of what's working within their organisations our 3 business leaders will be sharing plenty of insights. We'll be discussing how to build inclusive cultures of the future; the shifting employee value proposition and how do we a multi generational workforce.



MARK MALCOMSON CBE

Principle & Chief Executive, City Lit

Mark has been Principal and Chief Executive of City Lit, Europe's biggest adult education college, since 2011. Previously, he was the Director of Executive Education at London Business School and President of the New York Institute of Finance.

He possesses a Bachelor of Laws from the University of Edinburgh; a Diploma in Legal Practice from the University of Strathclyde; and a Masters in International Relations from the University of Kent. His roles as trustee have included the National Institute of Adult Continuing Learning; University of Kent; and The English Speaking Union.



CLARE BARLOW

Chief People Officer, National Nuclear Laboratory

Clare is passionate about driving the people agenda across the business with an inclusive and sustainable approach.

Clare joined NNL in 2018 from BAE Systems, where she spent the previous ten years as HR Director for the UK and International Combat Air division. Prior to BAE Systems, Clare was Head of HR at Royal Mail, British Airways and a number of manufacturing organisations. Clare has a wealth of experience specialising in strategy development, organisational development, change management and employee relations.



ALEXANDRA KREFT

Vice President, EMEA Global Alliances, Dell

Alexandra is part of the European leadership team at Dell Technologies as well as an executive member of the Management Board of Dell EMC GmbH.

Alexandra has a leadership passion and commitment to diversity, and she actively engages in closing the gender imbalance within the IT industry by developing (female) development programs and mentoring female talents on different career levels. She is also highly active in the regional community as a passionate advocate for women in technology.

Seeing Beyond the Colour

We are delighted to be hosting a specific discussion on the challenges women of colour face in the workplace.

The debate will share interesting statistics; look at how we engage in different conversations; the roles leaders must play and the importance of creating allyship.



RITA KAYDEA

Senior Project Lead, Epiq Global

Rita has experience that spans 20 years in IT consultancy and software development across multiple industry sectors.

Rita drives a customer-centric and collaborative approach and culture throughout the programmes. She focuses on delivering change, creating true partnerships with aim of become a trusted advocate.

Rita is passionate about the development of people to achieve their aspirations, while giving support to young women & men who are keen to develop their careers in the IT sector.



CLAIRE D'ABREU-HAYLING

Chief Scientific Officer, Sandoz

Claire leads an organization of over 1,800 associates across 5 major countries globally. She is responsible for Sandoz' global development network.

Claire is a highly experienced industry executive with 30 plus years in drug development and a strong advocate of women in leadership in STEM and a champion for Inclusion and Diversity in her current and previous organizations.



JANE BATES

Founder, Koru Collective Limited

Jane is now 30 years into her rewarding career, after working at the Co-operative as an Executive Transformation Change Director for a number of years as well as a Senior Marketing Manager at Tesco all centered around defining and executing transformational change.

"Organisations succeed because they have a passion and unending curiosity about people."

**RISING STAR**

SHINE AWARDS
THE WLA'S INTERNATIONAL
WOMEN'S DAY CONFERENCE

The Rising Star Award celebrates the best emerging talent. It applauds professionals showing passion, commitment and promise in their careers and supports them for further success.

Award sponsored by

**Sir Robert
McALPINE**

**MALE CHAMPION OF CHANGE**

SHINE AWARDS
THE WLA'S INTERNATIONAL
WOMEN'S DAY CONFERENCE

The Male Champion of Change Award recognises male champions of equality and diversity in the workplace. The recipient is someone who has gone above the call of duty to support his female colleagues with career progression, empowering women to fulfil their potential and instilling an inclusive culture in the workplace.

Award sponsored by

**MID
COMMUNICATIONS**

**SUSTAINABILITY
LEADER OF THE
YEAR**

SHINE AWARDS
THE WLA'S INTERNATIONAL
WOMEN'S DAY CONFERENCE

The Sustainability Leader of the Year Award recognises leaders who are driving the Sustainability Agenda forward in their organisation. This leader demonstrates innovation in their approach and are always willing to go the extra mile to transform their business for good.

Award sponsored by

amey



FEMALE LEADER OF THE YEAR

SHINE AWARDS
THE WLA'S INTERNATIONAL
WOMEN'S DAY CONFERENCE

The Female Leader of the Year Award celebrates the women who are outstanding leadership role models. These women bring great feminine energy (self-care, compassion and purpose) combined with tenacity and drive to deliver results. They are committed to moving women up the corporate

Award sponsored by



REMARKABLE WOMAN OF THE YEAR

SHINE AWARDS
THE WLA'S INTERNATIONAL
WOMEN'S DAY CONFERENCE

The Remarkable Women Award celebrates women who have overcome adversity, make our lives better and lift others up along the way. Women who inspire through their resilience, pushing the boundaries of what is possible, forging new pathways and becoming true role models.

Award sponsored by



OUTSTANDING WLA CONTRIBUTOR OF THE YEAR

SHINE AWARDS
THE WLA'S INTERNATIONAL
WOMEN'S DAY CONFERENCE

The Outstanding WLA Contributor of the Year Award recognises a member who has committed to her learning and development, despite a busy workload and home-life. This member has identified and achieved her leadership goals, whilst being a trusted adviser to other members of the WLA.

Award sponsored by



PEOPLE & TALENT INNOVATORS OF THE YEAR

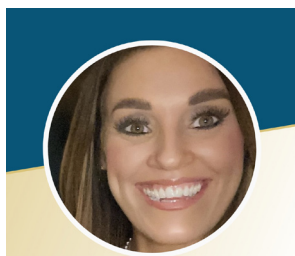
SHINE AWARDS
THE WLA'S INTERNATIONAL
WOMEN'S DAY CONFERENCE

People & Talent Innovators of the Year Award recognises a team that are innovating the way they attract, retain and develop talent in their organisations. Working tirelessly to find ways of minimising bias, simplifying processes and engaging line managers to smarter and more impactful ways of working.

Award sponsored by



RISING STAR



CLAIRE CHARLSON
Vimto, Nichols PLC



ELLIE HOWARD
Quorn Foods



ALICE HERRING
MID Communications



LUCY DAVIES
BAE Systems

MALE CHAMPION OF CHANGE



PAUL PRYOR
Quorn Foods



STEPHEN CLABBURN
ABB



PETER LANTRY
Hitachi Energy

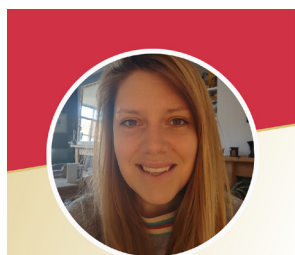


DAVE MOON
Cadent Gas

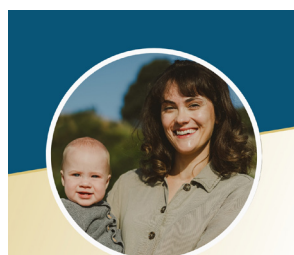
SUSTAINABILITY LEADER OF THE YEAR



ALICE HANDS
Sir Robert McAlpine



EMILY DAVIES
Amey



BIBI RODGERS HUNT
Quorn Foods



CHRISTINE SHILLINGTON
Vimto, Nichols PLC

FEMALE LEADER OF THE YEAR



CHARLOTTE DEAN
Quorn Foods



LISA FITZELL
Elegant Resorts

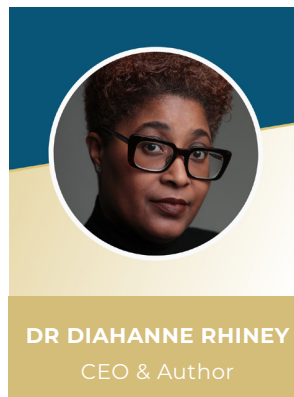
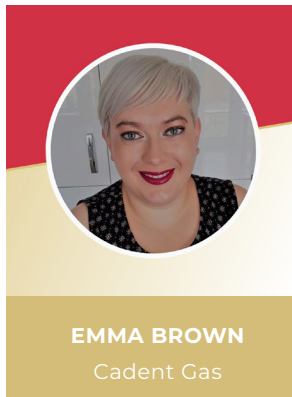


MALGORZATA MOUSSA
ABB

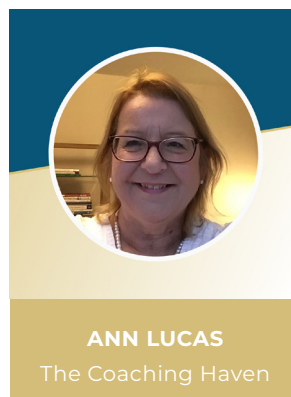


DIANE BENNETT
Cadent Gas

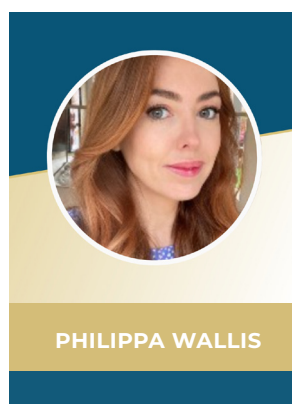
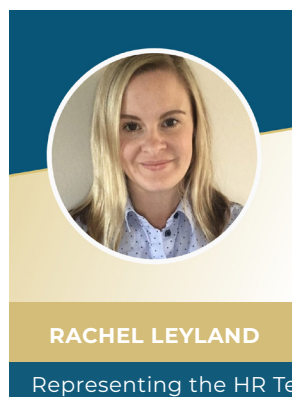
REMARKABLE WOMAN OF THE YEAR



OUTSTANDING WLA CONTRIBUTOR OF THE YEAR



PEOPLE & TALENT INNOVATORS OF THE YEAR



CONGRATULATIONS TO OUR SHORTLIST



Diversity is at the core of our story.

Join us.

At ABB, a culture of diversity, inclusion and equal opportunity is critical to our business success and makes us stronger. We strive for a culture where individual differences are not only welcomed but celebrated.

#MyABBstory
Visit careers.abb



Let's write the future. Together.



**Sir Robert
McALPINE**

"Sir Robert McAlpine is a family-owned building and civil engineering company operating across the UK. In 2019, we celebrated our 150th Anniversary.

The values at the heart of our operations include a commitment to the highest standards of safety, quality, engineering excellence, sustainability, and an unswerving focus on the needs and aspirations of our clients.

We believe being inclusive and nurturing a diversity of talent and skills will help us to continue our legacy of technical excellence to proudly build Britain's future heritage."

 **mID**
DIGITAL SOLUTIONS

**TOGETHER, WE'RE
MORE THAN MOBILE**

BROADBAND



**UNIFIED
COMMUNICATIONS**

MOBILE



**ARE YOU READY
FOR THE 2025
ISDN SWITCH OFF?**





We're taking bolder steps

We're stepping up our ambitions and setting out bolder priorities to positively benefit people, places and our planet.

Find out how we're being bolder with our ideas, and bolder in challenging business as usual:

amey.co.uk/
bolder-steps-together



We are a proud sponsor of the IWD Conference

Our people help us to drive diversity and inclusion within our business, we empower them so they can make a real difference



Scan Me

To learn about our Diversity and Inclusion efforts

stanmore
the insurance people

Speak to the experts



Stanmore Insurance Brokers is an award-winning local chartered insurance broker. Speak to one of the team to find out how we can help you.

01204 570370
info@stanmoreinsurance.com



OR SCAN ME

TATA
TATA CHEMICALS EUROPE

Serving society through science
www.tatachemicalseurope.com



Who We Are...

We are a major chemicals manufacturer based in Cheshire with a passion for manufacturing products that we all use every single day. We are proud to be the first business in the UK to develop patented technology to use carbon capture in our process. We are on a journey to be a NetZero producer by 2035.



Our Products...

Our core products of sodium carbonate, sodium bicarbonate and white salt, go into a variety of applications from animal feed, baking ingredients through to pharmaceutical drugs. Thousands of customers rely on our products to make every day items like:

- Glass
- Detergents Food & Bakery
- Pharmaceuticals
- Dialysis Products
- Water treatment & Purification
- Animal Feed

Our People...

We are an inclusive Company that is wholeheartedly committed to equality of opportunity. We encourage and celebrate diversity because broader perspectives, skills, experience and knowledge will enrich and enhance the value we bring to each other, our clients, our projects and the communities in which we operate.



Our Future...

We are rightly proud of our heritage of 150 years of Manufacturing in Cheshire but we never stand still. Our journey is far from over as we embark on the next phase of our journey to Net Zero.

Masterclasses



Understanding Women's Bio Rhythms

with Kayla Osterhoff, Women's Health Expert and Founder, Her Biorhythms

Kayla has dedicated her career to empowering women around the world and teaching the science of feminine biology. She believes that women are the greatest untapped resource in modern society and that it is our responsibility as a society to research and support women better.

In this interactive masterclass Kayla will explore the following themes: Current women's health statistics and latest research, the gender gap in health science research/education plus impact for women, common misconceptions about women's biology and health, unlocking your unique female cognitive superpowers and lots more!



Wabisugi - The Art of Resilience for Everyday Warriors

with Graham Wilson, International Leadership Expert and Founder, Successfactory

If you are feeling overwhelmed, stressed, burnt out, low on energy and want to create more vibrancy, clarity, energy, and vitality then this workshop is designed for you!

With this in mind, in this engaging and practical masterclass Graham will share the wabisugi journey with you. This is a powerful model that has been tried, tested, and proven to deliver extraordinary results. Having a visual framework helps you to conceptualise all the elements of resilience, join the dots and work on the right areas for you.



The Art of the Feminine Leader

with Sandra Pinnington, Founder of The WLA and Executive Coach

With two decades of working with women, Sandra understands how to overcome many of the misconceptions about leadership that women hold.

In this interactive masterclass, Sandra Pinnington, Founder of the WLA will be sharing her perspective and her research into what it really means to be a feminine leader. Sandra will cover: The mindset you need to transform your leadership, why feminine leadership is an art not a science, what women need to succeed and how this is different from our male colleagues and a bit about The WLA – the journey explained and why our members keep coming back.



High Performing Leaders of the Future

with Colin McArdle, Managing Partner, Time Consulting Group

Founder of Time Consulting Group a consultancy deploying technology solutions such as, Robotics Process Automation, Machine Learning, Artificial Intelligence and Data Science, to reduce dependency on people to perform tasks. Colin helps companies improve performance across a variety of sectors

During Colin's masterclass he'll be discussing and sharing his thoughts on the following issues: the future of work and understanding the impact of technology, the fundamentals of high performance and exploring the tools for productive leadership.

Keynote Speakers



SARAH CREW

Chief Constable,
Avon and Somerset
Police

Sarah became an officer with Avon and Somerset Police in September 1994 and took on the role of Deputy Chief Constable in June 2017. **In November 2021 she became their first female Chief Constable.** Sarah is also the national lead for violence and domestic abuse against women.



KAYLA OSTERHOFF

Women's Health
Expert & Founder,
Her Biorhythms

After spending several years as a health scientist, Kayla has now **dedicated her career to empowering women around the world and teaching the science of feminine biology.**

She believes that women are the greatest untapped resource in modern society and that it is our responsibility as a society to research and support women better.



PENNY BRISCOE OBE

Inspirational Speaker

Penny has been Director of Sport at the British Paralympic Association since 2002 having previously been employed as Senior National Coach for British Canoeing for the Atlanta 1996 and Sydney 2000 Olympic Games.

Having been Deputy Chef de Mission for ParalympicsGB since Athens 2004 Penny was made Chef de Mission for the first time for the Sochi 2014 Winter Paralympics and delivered this role at the Rio 2016 Summer Paralympic Games, PyeongChang 2018 Winter Paralympic Games and most recently the postponed Tokyo 2020 Paralympic Games, our most successful Games to date.

Penny is confirmed as Chef de Mission for the next summer Paralympic Games in Paris 2024 and is working hard alongside colleagues at the British Paralympic Association to deliver the organisation's 'Championing Change' strategy.

Thank you to our MC for today's event, Mark Simmonds



Mark is a management trainer and consultant, operating in the areas of creativity and innovation. He runs a boutique agency, GENIUS YOU, and has worked with a large number of national and international companies.

Mark had his first book published in 2019 called Breakdown and Repair which covers his own experiences of mental ill health, both as a sufferer and as a carer. In March 2022, he had his second book published. Beat Stress At Work focuses on the workplace and is part story, part self-help book.

Mark now shares what he has learnt through his own journey with others, encouraging people to consider their mental wellbeing alongside their career aspirations.

And a big thank you to Consilio for their generous donations to our goody bags and to Essar Oil for sponsoring our flower wall.



Girls Out Loud is a UK based charity set up in 2009 by entrepreneur, author, coach, speaker, trainer and female champion Jane Kenyon.

Jane had spent the previous 15 years as an entrepreneur in the personal development arena working exclusively with women and felt the need to expand her legacy to working with teen girls. At the time the UK had the highest teen pregnancy in Europe, low teen aspirations and mental health issues were just starting to peek around the corner in every school Pastoral meeting.



The Roy Castle Lung Cancer Foundation Chocolate Box Raffle

"We are delighted to announce our very special raffle. Play to win a beautiful piece of jewellery. Boxes cost £10 and you can buy as many as you like! All proceeds will support the 47,000 people diagnosed with lung cancer every year." - Paula Chadwick, CEO

Help Roy Castle Lung Cancer Foundation
achieve their mission – a world where no one
dies of lung cancer

www.roycastle.org

Fast forward 10 years and due to the dominance of social media, a society fixated on appearance with appalling body confidence and little movement on the role of women in society, teen girls are in the midst of a mental health crisis.

Their mission is to empower and inspire teenage girls in the UK and beyond to have confidence, self belief, emotional resilience and a positive self image which, in turn, supports them to think big, embrace risk and reach for the stars.

Jane is challenging others to step up, help Girls Out Loud, and help the teenage girls most in need.

www.girlsoutloud.org.uk

Celebrating International Women's Day

The WLA's Annual Conference coincides with the global International Women's Day (IWD) taking place on 8th March. IWD has been celebrated around the globe for over 100 years and adopted by the UN in 1977.

We know there is still much work to achieve gender parity. The World Economic Forum have suggested over 150 years before that goal is reached. In terms of positives, there is great work happening around the world. Movements like #MeToo and #TimesUp together with many employers publishing annual DE&I reports all supporting the cause and we are seeing more women than ever in our boardrooms.

The WLA seeks to celebrate the achievements of women including through our annual SHINE Awards, celebrated at our Conference today.



**We will celebrate
women's
achievements**

#BreakTheBias



SANDRA PINNINGTON

Founder

The WLA & Executive Insights

Entrepreneur, executive coach, author and speaker, Sandra is expert at unlocking the full potential of the leaders she works with, counting more than 25 years coaching professionals and corporate teams.

She has spoken on a wealth of topics, from embracing feminine energy, authentic leadership, and purpose, to overwhelm and owning your truth.

Sandra is a passionate philanthropist, raising over £20,000 for MicroLoan Foundation through her November global WLA Coachathon event, and recently accepted Forbes' exciting invitation to become a member of its prestigious Forbes Coaches Council.

Our Ambassadors

We would like to say an enormous thank you to our WLA Ambassadors who have each helped to make this event so special. Our ambassadors support The WLA because they are committed to gender equality, wish to be part of an inclusive community supporting women, and know the importance of discussing and sharing best practice across organisations.



IAN FUNNELL
Chair, National
Nuclear Laboratory



JEREMY SHEARS
Chief Scientist, Shell



CAROL ELDERFIELD
Founder,
Step and Grow



ANN LUCAS
Director, The
Coaching Haven



**CHRISTINE
SHILLINGTON**
People &
Sustainability
Director at Nichols
Plc (The Home of
Vimto)



PAULA CHADWICK
CEO, Roy Castle Lung
Cancer Foundation



DANNY SIMPSON
Founder and CEO,
MID Communications



JACKIE HYDE
Managing Director,
Stanmore Insurance



**CLAIRE D'ABREU-
HAYLING**
Chief Scientific
Officer, Sandoz



KAREN BROOKES
Director, People and
Infrastructure, Sir
Robert McAlpine



MARK SIMMONDS
Owner & Director,
Genius You

Ready to Awaken Your Potential?

By joining the WLA you will...

- Align your heart, mind, body and soul
- Improve your productivity and outcome focus
- Know your brilliance and your leadership strengths
- Discover career and leadership planning tools
- Deepen your confidence and courage in the workplace

www.thewla.com

“I have been a member now for four years and I find it **invaluable**, it’s a safe environment to challenge yourself, take yourself out of your comfort zone, to ask those questions that you think are silly, in a confidential environment with **like-minded women**.”

Paula Chadwick, CEO, Roy Castle Lung Cancer Foundation

“Since joining the WLA, I really do not know what has happened to me, but I feel like a different person now professionally! I have such confidence and I attack every day with all the skills I have learned. **I can’t praise the WLA enough, it changed my life.**”

Claire Roberts, General Counsel, UK & Ireland, Hitachi Energy

“The WLA is a **thought-provoking** environment that will help every aspiring female leader to be **empowered** and bring ideas to the workplace that will make a difference to all.”

Karen Brookes, Director of People & Infrastructure, Sir Robert McAlpine

Join The WLA Today!



MONTHLY LIVE LEADERSHIP MASTERCLASSES

These sessions are focused on your emotions and self knowledge. To grow professionally you need to give yourself the chance to understand what is happening within you.



MONTHLY LIVE PRODUCTIVITY POWER HOURS

Monthly Live Planning Sessions over Zoom – to get you clear on your priorities; out of overwhelm, and give you the feeling as though you are back on track.



WLA ONLINE LIBRARY

Members Only Online Library of Resources – access hundreds of webinars, inspiring interviews, podcasts, motivational videos and past magazines with leading experts in their field!



THE WLA COMMUNITY

Connect with other incredible women and learn strategies to have a fulfilling career. Access to our private LinkedIn group.



ANNUAL FULL DAY PLANNING

Every January we get together to map out your plans for the year. This is a great opportunity to gain clarity and introduce structure to your practice.



ACCOUNTABILITY BUDDIES

As a WLA Member you will have your own accountability buddy who will work and help you where you are stuck.



ONBOARDING PACKAGE

Your WLA experience begins with our onboarding package. This includes an onboarding webinar, leadership development plan as well as a self assessment to map out your leadership journey.

Results You Can Expect

BALANCED LIFESTYLE

Make decisions that lead to the life you want to create. Feeling stuck and as though you never have enough time? Use our proven tools and frameworks to achieve a balanced lifestyle that's right for you.

BELONGING

Join our incredibly friendly community of like-minded women. We only have nice girls in our gang – those women who want to give as much as receive, are inspiring, caring and courageous in their decision making.

AUTHENTIC LEADERSHIP

Learn how to blend masculine and feminine leadership qualities. Embrace your creativity, connectivity and collaboration. Develop your influencing, impact, communication and engagement. Be the role model you want to see in the world.

MEMBERSHIP OPEN UNTIL MONDAY 20 MARCH

Sign up here: www.thewla.com

OR visit our WLA stand in the foyer.



WWW.THEWLA.COM

Become the leader you always knew you could be

support@thewla.com | www.thewla.com



[/wlawomen](https://www.instagram.com/wlawomen)



[/women-leaders-association](https://www.linkedin.com/company/women-leaders-association)



[/womenleadersassociation](https://www.facebook.com/womenleadersassociation)

#IWD2023 #InternationalWomensDay #SHINEAwards #TheWLA